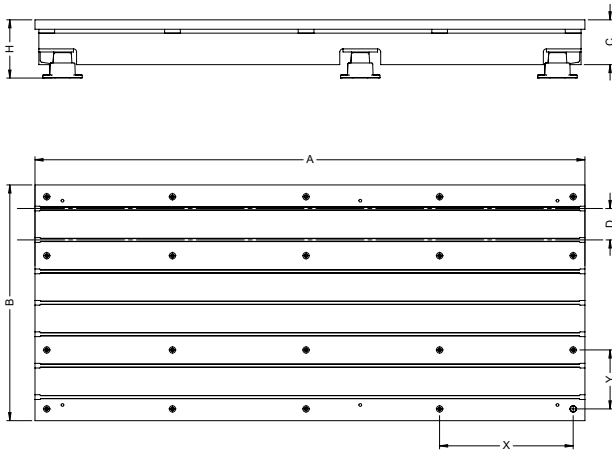
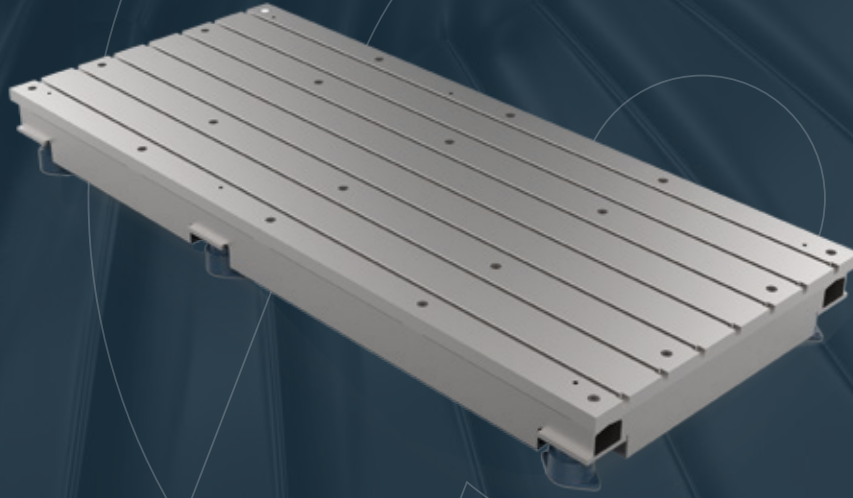


Steel Construction Test Table

PCS



Measurements:

Product Code	A	B	C	D	H	X	Y
PBP-SC01	2000	1300	255	150	320	380	300
PBP-SC02	3500	1500	285	200	370	840	415
PBP-SC03	4500	1500	335	250	420	870	530
PBP-SC04	6000	2000	385	300	470	975	645

The T-Slot channels (D) and the mounting interface (X-Y) can optionally be positioned at different distances.

Features:

IC engine and transmission tests

- ★ S355J material hassah machined t-channel test table
- ★ Main chassis welded from box profile, NPI or NPU profiles
- ★ Stress relief after welding
- ★ Epoxy primed and RAL 7016 epoxy wet painted
- ★ DIN 508 H12 t-channels
- ★ Suitable for mounting mechanical spring or pneumatic vibration damping elements
- ★ Precision machined surfaces