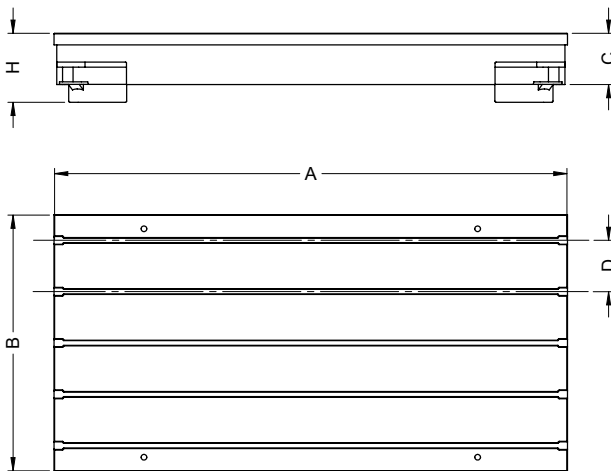
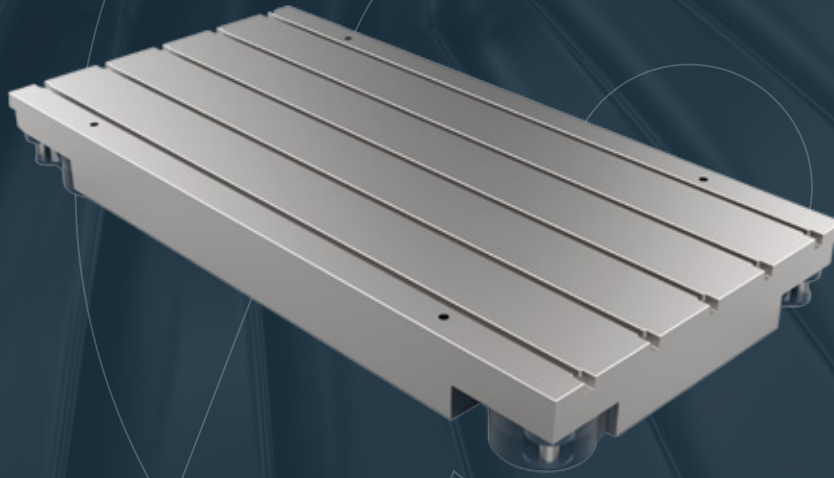




# Mono Block Test Table

PCS



## Measurements:

| Product Code | A    | B    | C   | D   | H   |
|--------------|------|------|-----|-----|-----|
| PBP-MB01     | 1500 | 750  | 180 | 150 | 250 |
| PBP-MB02     | 2000 | 1000 | 200 | 200 | 270 |
| PBP-MB03     | 4000 | 1500 | 220 | 300 | 300 |
| PBP-MB04     | 6000 | 2000 | 240 | 400 | 320 |

T-Slot channel slots (D) can optionally be positioned at different distances.

## Features:

For IC motor tests

- ★ T-channel test table made of GG-25/30 or GGG-50/60 cast iron or ductile iron with precision machined t-channel
- ★ Stress relief after casting
- ★ Epoxy primed and RAL 7016 epoxy wet painted
- ★ DIN 508 H12 t-channels
- ★ Suitable for mounting mechanical spring or pneumatic vibration damping elements

Precision machined surfaces