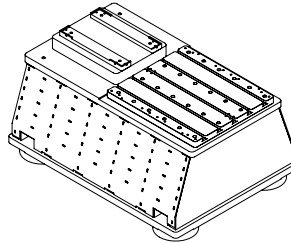
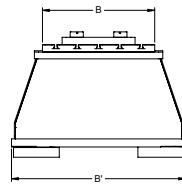
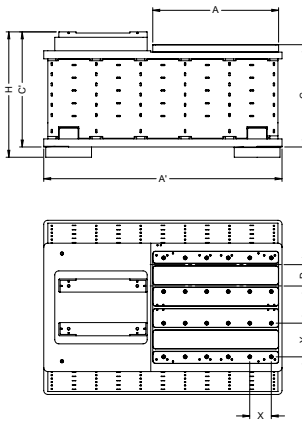
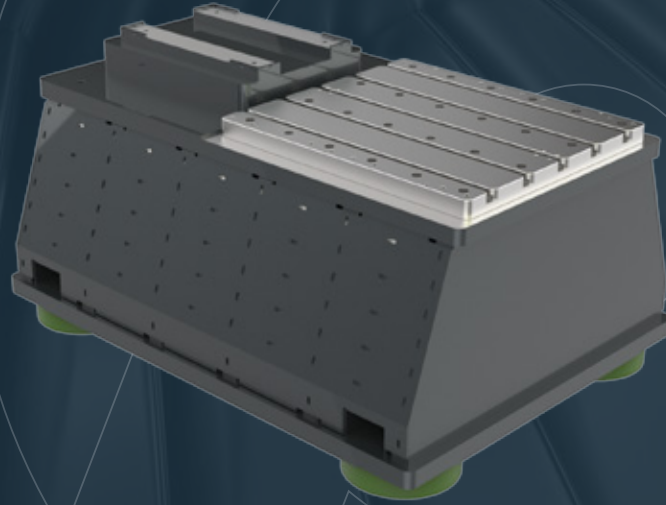


High Speed Motor Test Table

PCS



Measurements:

Product Code	A	A'	B	B'	C	C'	D	H	X	Y
PBP-HS01	1770	935	1250	1750	760	847	159	931	186	276
PBP-HS02	2000	4500	1500	200	770	855	200	935	380	325
PBP-HS03	4000	6500	1750	2250	780	865	250	945	780	396
PBP-HS04	6000	8200	2000	2500	790	875	300	955	1180	465

T-Slot channels (D) and mounting interface (X-Y) can optionally be positioned at different distances.

Features:

Test table for mobility and electric vehicle motors suitable for high speed operation

- ★ Made of welded S355J material
- ★ Stress relief after welding
- ★ UUT fixture connection interface
- ★ Dynamometer connection interface
- ★ DIN 508 H12 interchangeable table with t-slot
- ★ Epoxy primed and RAL 7016 epoxy wet painted
- ★ Suitable for pneumatic vibration damping element assembly
- ★ Precision machined surfaces