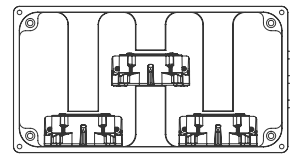
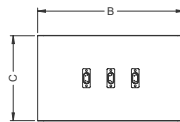
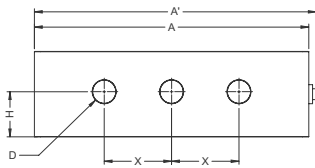
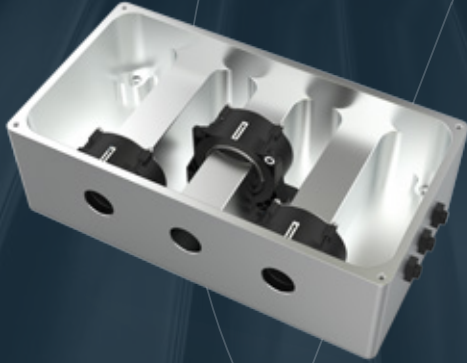


Current and Voltage Measurement Unit

PCS



Measurements:

A	B	C	D	D'	H	L	X	Y	Y'
375	310	295	310	100	119.5	154	232	285	315

Technical Specifications:

Measurement Range	Accuracy	Supply Voltage	Output Voltage	Conversion Rate	Operating Temperature	Measurement Channel Temperature
200 A	0.02 %	19-36VDC	+/-10VDC	-10/70°C		3
1000A	0.0018%	15-15VDC	1/1500		-40/85°C	1
1000A	0.0018%	15-15VDC	1/1500		-40/85°C	3

- * Monoblock aluminium body
- * Connection interfaces with connectors
- * Compact design with the largest opening for cables and busbars
- * Extended Working temperature range: -40..+85 °C
- * Special design with EMI/EMC protection (optional)